

POOL LAB
Pool Water Management

2024/25 Catalogue

Effective 1st July 2024

MAX MODELS + EXP MODULES

AVAILABLE 1st AUGUST



INDEX

Page 1	Ultimate Packages
Page 2	POOL LAB Ultimate Prices
Page 3	POOL LAB PLmax Salt Chlorinators - AVAILABLE 1ST AUGUST Wifi enabled for use with the POOL LAB app for the ultimate in automation & control Compatible with expansion modules and the ASP - Auto Sampling Photometer Compatible with a SPA SWITCH for precise control of Pool and Spa combination systems Available with optional Heat Pump Override - HPO
Page 4	POOL LAB ASP - Automated pH and Chlorine control Must be purchased with a PLmax or PLplus Salt Chlorinator The ASP is the worlds most accurate and reliable pH and chlorine control sytem
Page 5	POOL LAB EXP - Expansion Modules - AVAILABLE 1ST AUGUST Must be purchased with a PLmax Salt Chlorinator EXP5 or the EXP9 provide for POOL LAB app control of third-party devices
Page 6	POOL LAB PLplus Salt Chlorinators Non-Wifi Compatible with the POOL LAB ASP - Auto Sampling Photometer Compatible with a SPA SWITCH for precise control of Pool and Spa combination systems Available with optional Heat Pump Override - HPO
Page 7	POOL LAB Classic Salt Chlorinators Non-Wifi Not compatible for use with POOL LAB EXP modules, POOL LAB ASP or SPA SWITCH Available with optional Heat Pump Override - HPO
Page 8	Mineral Lab Sytems For use with all mineral pool systems Mineral Lab Classic Salt Chlorinators Mineral Lab Plus Salt chlorinators Mineral Lab Max Salt Chlorinators
Page 9	Mineral Lab Minerals Low in ammonia to prevent mono-chloramine formation High purity to prevent staining and yellowing of the water
Page 10	POOL LAB HYBRID - Commercial Water Management Systems Salt Chlorinator & liquid chlorine feed hybrid systems with ASP pH and Chlorine Control Wifi enabled for use with the POOL LAB app Various models suitable for pools with bather loads of up to 200 persons per day
Page 11	Optional Extras Spa Flow Switch, tapping saddles, HPO leads, POOL LAB Salt Meter
Page 12 Page 13	Replacement Electrodes & Control Box Only Control box only
Page 14 Page 15	POOL LAB Spares & PURESILK Spares POOL LAB Spares & PURESILK Spares
Page 16	Images of common spares
Page 17	Warranty
Page 18	Terms of Trade

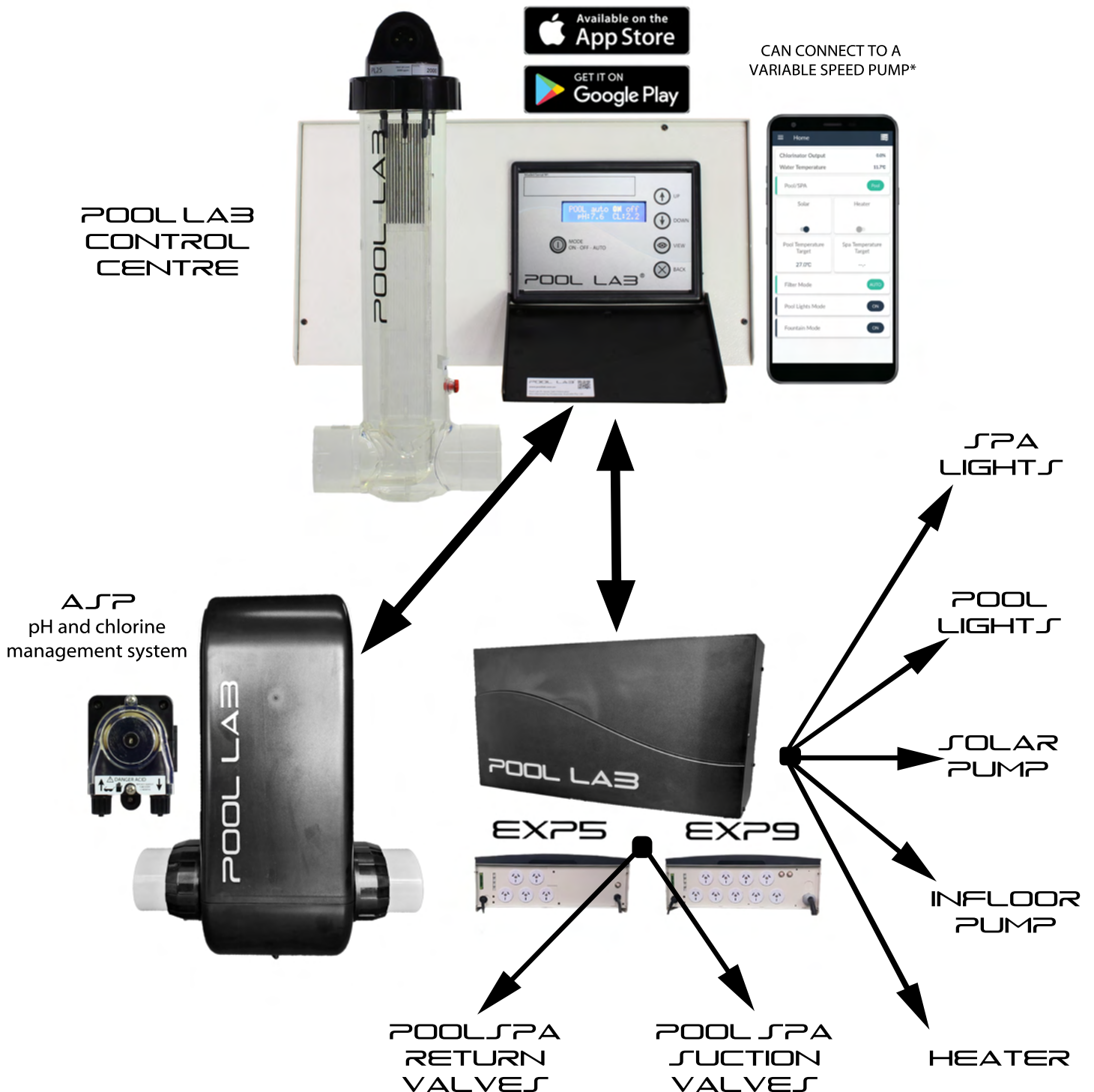
POOL LAB ULTIMATE PACKAGES

MAX MODELS + EXP MODULES AVAILABLE 1ST AUGUST

Central to the **Ultimate** system is a **POOL LAB** "Max" model Salt Chlorinator
The Wifi enabled Max model and **POOL LAB** app allow you to control the pools most important elements.

Add an EXP5 or EXP9 expansion module which, through the app, allows for automation and control of third-party equipment such as lights, valves, heaters and pumps.

Add an ASP - Auto Sampling Photometer, the worlds most reliable, accurate and trusted technology to measure and control pH and chlorine levels.
Chlorine measurements are displayed in ppm.



Pool Lab Ultimate Packages

POOL LAB ULTIMATE

Save 5% by purchasing an ULTIMATE package

Salt Chlorinator + ASP pH and Cl control system + EXP Expansion module to control devices via the POOL LAB app

List Price

UPL25-5	POOL LAB ULTIMATE 25-5	PL25MAX - ASP - EXP5	\$6,149.00
UPL25-9	POOL LAB ULTIMATE 25-9	PL25MAX - ASP - EXP9	\$6,754.00
UPL35-5	POOL LAB ULTIMATE 35-5	PL35MAX - ASP - EXP5	\$6,582.00
UPL35-9	POOL LAB ULTIMATE 35-9	PL35MAX - ASP - EXP9	\$7,187.00
UPL45-5	POOL LAB ULTIMATE 45-5	PL45MAX - ASP - EXP5	\$7,047.00
UPL45-9	POOL LAB ULTIMATE 45-9	PL45MAX - ASP - EXP9	\$7,652.00

MINERAL LAB ULTIMATE

UML25-5	MINERAL LAB ULTIMATE 25-5	ML25MAX - ASP - EXP5	\$6,149.00
UML25-9	MINERAL LAB ULTIMATE 25-9	ML25MAX - ASP - EXP9	\$6,754.00
UML35-5	MINERAL LAB ULTIMATE 35-5	ML35MAX - ASP - EXP5	\$6,582.00
UML35-9	MINERAL LAB ULTIMATE 35-9	ML35MAX - ASP - EXP9	\$7,187.00
UML45-5	MINERAL LAB ULTIMATE 45-5	ML45MAX - ASP - EXP5	\$7,047.00
UML45-9	MINERAL LAB ULTIMATE 45-9	ML45MAX - ASP - EXP9	\$7,652.00

Pool Lab Ultimate packages with Heat Pump Override

Additional Heat Pump Override is available with the HPO packages

For HPO packages, choose the suitable POOL LAB to Heat pump linkage in optional extras

UPL25-5/HPO	POOL LAB ULTIMATE 25-5/HPO	PL25MAX/HPO - ASP - EXP5	\$6,230.00
UPL25-9/HPO	POOL LAB ULTIMATE 25-9/HPO	PL25MAX/HPO - ASP - EXP9	\$6,835.00
UPL35-5/HPO	POOL LAB ULTIMATE 35-5/HPO	PL35MAX/HPO - ASP - EXP5	\$6,662.00
UPL35-9/HPO	POOL LAB ULTIMATE 35-9/HPO	PL35MAX/HPO - ASP - EXP9	\$7,268.00
UPL45-5/HPO	POOL LAB ULTIMATE 45-5/HPO	PL45MAX/HPO - ASP - EXP5	\$7,128.00
UPL45-9/HPO	POOL LAB ULTIMATE 45-9/HPO	PL45MAX/HPO - ASP - EXP9	\$7,733.00

MINERAL LAB ULTIMATE with HPO

UML25-5/HPO	MINERAL LAB ULTIMATE 25-5/HPO	ML25MAX/HPO - ASP - EXP5	\$6,230.00
UML25-9/HPO	MINERAL LAB ULTIMATE 25-9/HPO	ML25MAX/HPO - ASP - EXP9	\$6,835.00
UML35-5/HPO	MINERAL LAB ULTIMATE 35-5/HPO	ML35MAX/HPO - ASP - EXP5	\$6,662.00
UML35-9/HPO	MINERAL LAB ULTIMATE 35-9/HPO	ML35MAX/HPO - ASP - EXP9	\$7,268.00
UML45-5/HPO	MINERAL LAB ULTIMATE 45-5/HPO	ML45MAX/HPO - ASP - EXP5	\$7,128.00
UML45-9/HPO	MINERAL LAB ULTIMATE 45-9/HPO	ML45MAX/HPO - ASP - EXP9	\$7,733.00

Pool Lab HPO Leads

ITEM CODE	DESCRIPTION	LIST PRICE
HPO240V	PL CHLORINATOR HEAT PUMP OVERRIDE 5.0m includes TRANSFORMER	\$250.00
HPOLV	PL CHLORINATOR HEAT PUMP OVERRIDE LEAD 5.0M	\$65.00

App Controlled Water Management System

Wi-Fi® Enabled with apps available for iOS and Android.

PL MAX SERIES

MAX MODELS + EXP MODULES AVAILABLE 1ST AUGUST



Features & Benefits

The **PL Max Series** has all the exceptional features of the PL Plus Series, and also offers the ability to control the system via mobile app through your home WiFi network. With WiFi capability, The PL Max Series allows seamless intergration with both the Pool Lab Auto Sampling Photometer and The Pool Lab EXP automation system.

Adding the PL ASP gives automated control of chlorine and pH levels in the pool.

Adding the PL EXP allows for the remote control of a host of third party devices such as lights, spa blower and boost pumps, gas and solar heaters, heat pumps, valve actuators and more. Complete pool automation controlled from your phone or tablet.

See over page for more info on the ASP and EXP.



Item	Length mm	Width mm	Height mm
Control Box	385	140*	210
Cell (Complete)	190	70	510

240v power lead length - 1.5m
Cell lead length - 3m

AVAILABLE IN 3 SIZES...

All models operate at 3000ppm salinity, and are covered by a 5 year warranty*

PL25MAX	PL35MAX	PL45MAX
Output: 25 grams chlorine gas per hour	Output: 35 grams chlorine gas per hour	Output: 45 grams chlorine gas per hour

Model N°	Description	Chlorine Gas Output (g/hr)	Max. Pool Size		Ctn Weight	List Price
			Indoor	Outdoor		
PL25MAX	POOL LAB MAX CHLORINATOR W/ 25 GRAM CELL	25	150,000	90,000	7.6kg	\$2,936.00
PL35MAX	POOL LAB MAX CHLORINATOR W/ 35 GRAM CELL	35	210,000	126,000	8.0kg	\$3,391.00
PL45MAX	POOL LAB MAX CHLORINATOR W/ 45 GRAM CELL	45	265,000	162,000	8.2kg	\$3,881.00
PL25MAX/HPO	POOL LAB PL25MAX/HPO SALT CHLORINATOR	25	150,000	90,000	7.6kg	\$3,021.00
PL35MAX/HPO	POOL LAB PL35MAX/HPO SALT CHLORINATOR	35	210,000	126,000	8.0kg	\$3,476.00
PL45MAX/HPO	POOL LAB PL45MAX/HPO SALT CHLORINATOR	45	265,000	162,000	8.2kg	\$3,966.00

Chlorine and pH Control

ASP

AUTO SAMPLING PHOTOMETER

Features & Benefits

- **The Patented ASP** Auto Sampling Photometer is the most accurate and reliable chlorine and pH water management system in the world.
- **Photometric Water Analysis** is the gold standard. Poolpower has delivered this technology, in-situ, at the pool and it is fully automatic.
- **The Easiest** chlorine & pH control system to install, program and maintain, no calibration or cleaning required.
- **Precise Chlorine Measurement** Chlorine results are displayed in ppm and are not effected by UV stabiliser (Cyanuric Acid) levels or hydrogen gas.
- **Unique, cell housing mounted** peristaltic acid pump - no need to plumb extra injection hardware, dedicated acid injection point is moulded into the cell housing.
- **Maintenance is easy** Simply replace the three reagent bags twice per year, and replace acid feed tubes as required.
- **Extend Cell Life** Working to a set chlorine target means chlorine is only produced as required, maximising cell life.
- **Optional Spa Flow Switch** Installed on the spa suction line, the spa flow switch lets the ASP know when spa only mode is activated, and switches to the programmed spa water volume ensuring set targets are maintained in a smaller body of water without the need for end user adjustment.



Item	Length mm	Width mm	Height mm
ASP	230*	200	420

* Does not include barrel unions
Data cable length - 3m
Acid pump cable length - 3m

5 Year Warranty on ASP | 2 Year Warranty on Acid Pump*

Remove Cover To Replace Reagent Bags



Combine With Any
POOL LAB 3

or
Mineral Lab

**MAX or PLUS
Model
Chlorinator**

Acid Injection Point Moulded Into Cell Housing

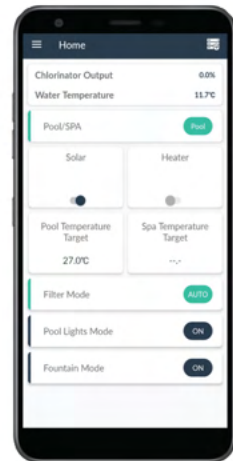
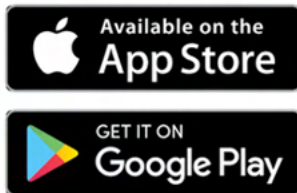


Max. Pool Size

Model N°	Description	Indoor	Outdoor	Ctn Weight	List Price
ASP	PL AUTO SAMPLING PHOTOMETER C/W ACID PERI-PUMP	ANY	ANY	4.5kg	\$1,999.00
55703	POOL LAB 3 BAG REAGENT SET				\$89.90
55619	PERISTALTIC PUMP SERVICE KIT				\$129.00
55615	ASP ACID PERI-PUMP WITH 3M CABLE				\$225.00
55622	ASP ACCESSORIES KIT				\$103.00

PL EXP SERIES

MAX MODELS + EXP MODULES AVAILABLE 1ST AUGUST



The PL EXP Series allows you to:

- Turn devices ON, OFF or AUTOMATE using timers
- Provides remote control using smart phone or computer
- Program POOL & SPA SCENES to simplify operation
- Touch the SPA SCENE button to initiate the valves to re-circulate the SPA water, Switch ON the PUMP, GAS HEATER and SPA LIGHTS.
- Whilst in the SPA, use voice commands to control the Blower, adjust the Water Temperature and more
- Clever solar and gas heating software maximises efficiency and prioritises heat input

How It Works:

- Send commands or view data using your smart phone or computer via the Pool Lab app, Wifi and the internet.
- The PL Max acts as the Commander and relays instructions to the EXP module.
- Controls and automates Pool & Spa devices, valves & heating
- Use a Smart Speaker to utilise voice commands

What You Need:

- PL or ML Max Salt Chlorinator (Wifi) – acts as the Commander
- ASP – Automated pH and chlorine control
- EXP5 or EXP9 Expansion Module
- Pool Lab Android or iOS app and a smart phone
- Optional – Alexa or Google Home Speaker
- EXP5 plugs into standard 10A GPO
- EXP9 comes fitted with 20A plug and switched 20A socket



EXP5



- 5 x 240V sockets configurable – ON/OFF/AUTO
- 4 x 24VAC valve actuator control – actuators not included
- 1 x Easy Fit filtration circuit temperature sensor
- Pool Lab app – download android or iOS version
- Optional – Easy fit roof and solar circuit temp sensors
- Standard 10amp power connection - plug and play

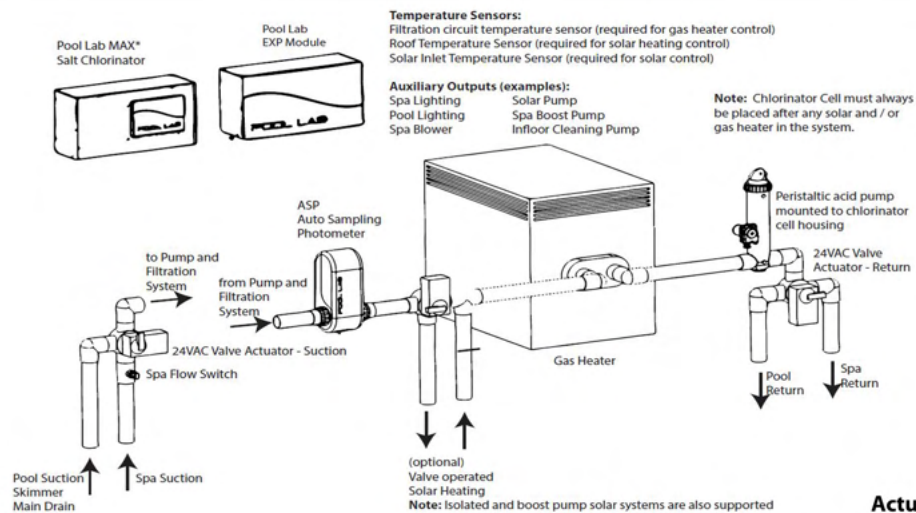
EXP9



- 9 x 240V sockets configurable – ON/OFF/AUTO
- 4 x 24VAC valve actuator control – actuators not included
- 1 x Easy Fit filtration circuit temperature sensor
- Pool Lab app – download android or iOS version
- Optional – Easy fit roof and solar circuit temp sensors
- Comes with 20amp power connection and switched socket - requires electrician

AVAILABLE IN 2 SIZES...

Controls either 5 or 9 devices. Covered by a 5 year warranty*



Model No	Description	No. of GPO's	Mains Power	Actuator Inputs	List Price
EXP5	POOL LAB EXP5 EXPANSION MODULE	5	10amp	4	\$1,650.00
EXP9	POOL LAB EXP9 EXPANSION MODULE	9	20amp	4	\$2,850.00
55630-3	EXP TEMPERATURE (WATER) SENSOR ASS'Y W/ 3M LEAD (1 Included with EXP5 / EXP9)				\$124.54
55630-15	EXP TEMPERATURE (ROOF) SENSOR ASS'Y W/ 15M LEAD				\$165.28
55630-30	EXP TEMPERATURE (ROOF) SENSOR ASS'Y W/ 30M LEAD				\$232.06
55630-KIT-3/15	EXP SOLAR TEMPERATURE SENSOR KIT 3M / 15M (OPTIONAL EXTRA)				\$200.01
55630-KIT-3/30	EXP SOLAR TEMPERATURE SENSOR KIT 3M / 30M (OPTIONAL EXTRA)				\$294.33

Water Management System

PL PLUS SERIES

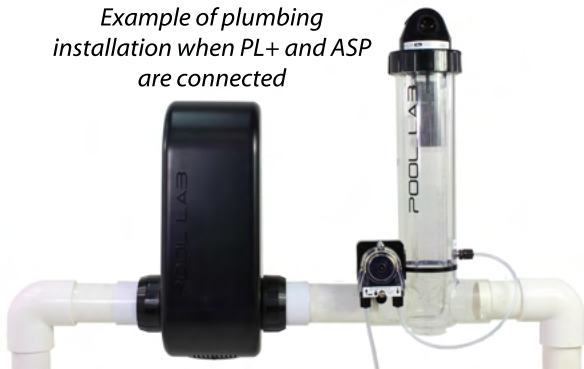
Features & Benefits

The **PL Plus Series** has all the exceptional features of the PL Classic Series, and also offers the ability to connect:

- **Optional Spa Flow Switch** Installed on the spa suction line, the spa flow switch lets the chlorinator know when spa only mode is activated, and pauses all chlorine production to prevent over chlorination in the smaller body of water.
- **Auto Sampling Photometer** (See over page - ASP) When combined with the ASP, the PL Plus model becomes the ultimate water management system giving you complete control of chlorine and pH levels. Once the ASP is connected the home screen display on the PL+ control box will show results of the most recent chlorine and pH tests.
- **Acid Pump Connection** The cell housing includes injection point for when the ASP acid pump is connected.



Example of plumbing installation when PL+ and ASP are connected



Item	Length mm	Width mm	Height mm
Control Box	385	140*	210
Cell (Complete)	190	70	510

240v power lead length - 1.5m
Cell lead length - 3m

AVAILABLE IN 3 SIZES...

All models operate at 3000ppm salinity, and are covered by a 5 year warranty*

PL25+



Output: 25 grams chlorine gas per hour

PL35+



Output: 35 grams chlorine gas per hour

PL45+



Output: 45 grams chlorine gas per hour

Model N°	Description	Chlorine Gas Output (g/hr)	Max. Pool Size		Ctn Weight	List Price
			Indoor	Outdoor		
PL25+	POOL LAB PLUS CHLORINATOR W/ 25 GRAM CELL	25	150,000	90,000	7.6kg	\$2,683.00
PL35+	POOL LAB PLUS CHLORINATOR W/ 35 GRAM CELL	35	210,000	126,000	8.0kg	\$3,150.00
PL45+	POOL LAB PLUS CHLORINATOR W/ 45 GRAM CELL	45	265,000	162,000	8.2kg	\$3,466.00
PL25+/HPO	POOL LAB PL25+/HPO PLUS SALT CHLORINATOR	25	150,000	90,000	7.6kg	\$2,768.00
PL35+/HPO	POOL LAB PL35+/HPO PLUS SALT CHLORINATOR	35	210,000	126,000	8.0kg	\$3,235.00
PL45+/HPO	POOL LAB PL45+/HPO PLUS SALT CHLORINATOR	45	265,000	162,000	8.2kg	\$3,551.00

Salt Chlorination

PL CLASSIC SERIES

Features & Benefits

- **Control Panel** Very easy to set times and operate with no complicated menus to navigate through.
- **Efficient Switch Mode Power Supply** Compact and light weight, the control box is high tech and efficient compared with old style heavy transformer power supplies.
- **Heavy Duty Control Unit** Weather proof and suitable for outdoor installations with display cover to protect against the effects of the sun.
- **Patented Automatic Self-Cleaning Cells** Clever software in the microprocessor automatically reverses the polarity of the electrolytic plates to maximise the self- cleaning process.
- **Automatic Low Salt Warning** If salt levels fall below the optimum level, the diagnostic display scrolls a message requesting a salt top up.
- **Automatic Memory Save** If there's a power failure all information is stored for at least seven days. There are no batteries that can go flat or leak.
- **Automatic Pump Protection Monitor** If the pump is starved of water and running dry, the Chlorinator switches the pump off to prevent damage occurring. Run dry timing can be adjusted for different hydraulic conditions and pump types.
- **Smart diagnostic display** No need to take your cell to a pool shop for testing. With a touch of a couple of buttons, the chlorinator will provide you with all the volts and amp data you require, on both polarities to establish if the cell is in good condition. Enter history to see total cell running hours with chlorine output per day and week displayed.



Item	Length mm	Width mm	Height mm
Control Box	385	140*	210
Cell (Complete)	190	70	510

240v power lead length - 1.5m
Cell lead length - 3m

AVAILABLE IN 3 SIZES...

All models operate at 3000ppm salinity, and are covered by a 5 year warranty*

PL25



Output: 25 grams chlorine gas per hour

PL35



Output: 35 grams chlorine gas per hour

PL45



Output: 45 grams chlorine gas per hour

Model N°	Description	Chlorine Gas Output (g/hr)	Max. Pool Size		Ctn Weight	List Price
			Indoor	Outdoor		
PL25	POOL LAB CLASSIC CHLORINATOR W/ 25 GRAM CELL	25	150,000	90,000	7.6kg	\$2,512.00
PL35	POOL LAB CLASSIC CHLORINATOR W/ 35 GRAM CELL	35	210,000	126,000	8.0kg	\$2,968.00
PL45	POOL LAB CLASSIC CHLORINATOR W/ 45 GRAM CELL	45	265,000	162,000	8.2kg	\$3,305.00
PL25/HPO	POOL LAB PL25/HPO CLASSIC SALT CHLORINATOR	25	150,000	90,000	7.6kg	\$2,597.00
PL35/HPO	POOL LAB PL35/HPO CLASSIC SALT CHLORINATOR	35	210,000	126,000	8.0kg	\$3,053.00
PL45/HPO	POOL LAB PL45/HPO CLASSIC SALT CHLORINATOR	45	265,000	162,000	8.2kg	\$3,390.00

Mineral Pool System

Mineral Lab



The Mineral Lab system is available in Classic or Plus models, allowing straight chlorination or full free chlorine and pH control, with the added wellbeing benefits of a mineral pool.

Features & Benefits

Sodium Hydroxide is a byproduct produced at the cell in a salt chlorinated pool. This byproduct is extremely alkaline, requiring constant balancing with pool acid to keep the correct pH. With the addition of Magnesium minerals, Magnesium Hydroxide is also produced, which is much less alkaline keeping pH more stable and requiring less adjustment.

Magnesium Hydroxide is also a natural water clarifier, giving the pool water a sparkling finish.

Using a Mineral Lab Plus Model allows the connection of an ASP (see page 9) and Spa Flow Switch, creating a complete water management system.



5 YEAR WARRANTY
3 Year + 2 Year Pro-rata

Item	Length mm	Width mm	Height mm
Control Box	385	140*	210
Cell (Complete)	190	70	510

240v power lead length - 1.5m
Cell lead length - 3m

AVAILABLE IN 3 SIZES...

All models operate at 3000ppm salinity, and are covered by a 5 year warranty*

ML25

Output: 25 grams chlorine gas per hour

ML35

Output: 35 grams chlorine gas per hour

ML45

Output: 45 grams chlorine gas per hour

Model N°	Description	Chlorine Gas Output (g/hr)	Max. Pool Size		Carton Weight	List Price
			Indoor	Outdoor		
ML25	MINERAL LAB CLASSIC CHLORINATOR W/ 25 GRAM CELL	25	150,000	90,000	7.6kg	\$2,512.00
ML35	MINERAL LAB CLASSIC CHLORINATOR W/ 35 GRAM CELL	35	210,000	126,000	8.0kg	\$2,968.00
ML45	MINERAL LAB CLASSIC CHLORINATOR W/ 45 GRAM CELL	45	265,000	162,000	8.2kg	\$3,305.00
ML25+	MINERAL LAB PLUS CHLORINATOR W/ 25 GRAM CELL	25	150,000	90,000	7.6kg	\$2,683.00
ML35+	MINERAL LAB PLUS CHLORINATOR W/ 35 GRAM CELL	35	210,000	126,000	8.0kg	\$3,150.00
ML45+	MINERAL LAB PLUS CHLORINATOR W/ 45 GRAM CELL	45	265,000	162,000	8.2kg	\$3,466.00
ML25MAX	MINERAL LAB MAX CHLORINATOR W/ 25 GRAM CELL	25	150,000	90,000	7.6kg	\$2,936.00
ML35MAX	MINERAL LAB MAX CHLORINATOR W/ 35 GRAM CELL	35	210,000	126,000	8.0kg	\$3,391.00
ML45MAX	MINERAL LAB MAX CHLORINATOR W/ 45 GRAM CELL	45	265,000	162,000	8.2kg	\$3,881.00

Model N°	Description - HPO Models	Chlorine Gas Output (g/hr)	Max. Pool Size		Carton Weight	List Price
			Indoor	Outdoor		
ML25/HPO	MINERAL LAB ML25/HPO CLASSIC SALT CHLORINATOR	25	150,000	90,000	7.6kg	\$2,597.00
ML35/HPO	MINERAL LAB ML35/HPO CLASSIC SALT CHLORINATOR	35	210,000	126,000	8.0kg	\$3,053.00
ML45/HPO	MINERAL LAB ML45/HPO CLASSIC SALT CHLORINATOR	45	265,000	162,000	8.2kg	\$3,390.00
ML25+/HPO	MINERAL LAB ML25+/HPO PLUS SALT CHLORINATOR	25	150,000	90,000	7.6kg	\$2,768.00
ML35+/HPO	MINERAL LAB ML35+/HPO PLUS SALT CHLORINATOR	35	210,000	126,000	8.0kg	\$3,235.00
ML45+/HPO	MINERAL LAB ML45+/HPO PLUS SALT CHLORINATOR	45	265,000	162,000	8.2kg	\$3,551.00
ML25MAX/HPO	MINERAL LAB ML25MAX/HPO PLUS SALT CHLORINATOR	25	150,000	90,000	7.6kg	\$3,021.00
ML35MAX/HPO	MINERAL LAB ML35MAX/HPO PLUS SALT CHLORINATOR	35	210,000	126,000	8.0kg	\$3,476.00
ML45MAX/HPO	MINERAL LAB ML45MAX/HPO PLUS SALT CHLORINATOR	45	265,000	162,000	8.2kg	\$3,966.00

Mineral Lab

Not all minerals sold for pools are the same.

Some low cost minerals are mined with little to no purification, leaving unwanted metals and ammonia in the product.

Ammonia leads to the formation of monochloramine which is undesirable in swimming pools and interrupts the safe testing and sanitation that free chlorine should provide.

Excessive iron in low quality minerals leads to staining and yellowing of the water.

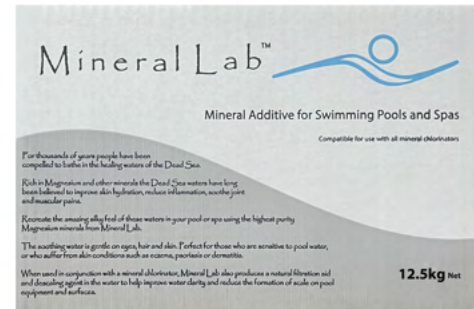
Mineral Lab is a premium product that contains the highest grade of minerals for your pool or spa.

If you want all the benefits that minerals can provide without all the issues associated with low quality products, Mineral Lab is your No.1 choice.

MLSPA Combined Mineral Complex for Spas

1.7kg carton of combined Magnesium Chloride and Sodium Chloride designed for salt chlorinated spas.

1 carton will bring 500 litres of water to 3000ppm salinity and the ideal magnesium level.



MLPOOL-S Magnesium Chloride Minerals for Pools

12.5kg bulk pack for converting pools to minerals.

1 carton will raise 15000 litres of water to the ideal mineral level.

MLPOOL-M Magnesium Chloride Minerals for Pools

6kg carton for maintenance of mineral pools.

As salt and magnesium will dilute at the same rate, simply add 1 carton for each 20kg of salt required to achieve the ideal salinity level.

No Magnesium testing required.



Item Code	Description	List Price
MLSPA	MINERAL LAB COMPLEX FOR SPAS 1.7KG CARTON	\$32.00
MLPOOL-S	MINERAL LAB MINERALS FOR POOLS 12.5KG CARTON (START UP)	\$96.00
MLPOOL-M	MINERAL LAB MINERALS FOR POOLS 6KG CARTON (MAINTENANCE)	\$56.00

BULK MINERALS: MLPOOL-25KG

Minimum order qty 12 x 25kg bags

Pallet delivery only

Max per pallet 40 x bags

For pallet orders freight will be calculated based on qty and location and submitted to you for approval prior to shipping

Item Code	Description	Weight	List Price
MLPOOL-25KG	MINERAL LAB COMPLEX FOR POOLS 25KG BULK PACK	25kg	\$160.00

Commercial Water Management System

PL HYBRID SERIES

The World's Best pH and Free Chlorine Management System. All the benefits and economy of salt chlorination with liquid chlorine back-up to meet demand in extreme commercial environments.

There are five configurations available to suit your requirements. Each Pool Lab Hybrid system has one "Commander" chlorinator at its core, producing up to 45gm/h of chlorine gas. Add to this up to four additional "Lieutenant" chlorinators for a total of up to 225gm/h from the chlorinators alone.

The peristaltic liquid chlorine pump is capable of feeding up to 60ml/min of 13% Sodium Hypochlorite, equivalent to approximately 450gm/h of additional chlorine gas as required, and the peristaltic acid pump feeds 16.5% Hydrochloric Acid to adjust the pH as required.

All Hybrid systems include:

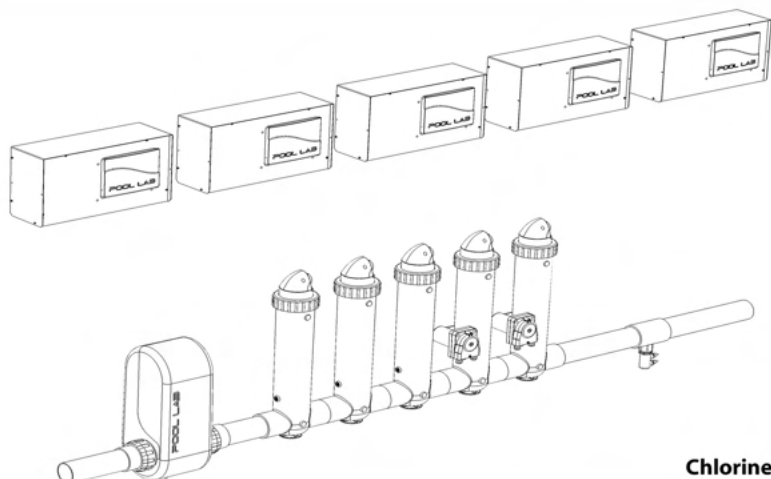
- 1 x Pool Lab ASP
- 1 x Peristaltic Acid Pump
- 1 x Peristaltic Chlorine pump
- 1 x Injection Manifold

PL Hybrid systems do not facilitate the use of a 'Spa Flow Switch'



AVAILABLE IN 5 SIZES...

All models operate at 3000ppm salinity, and are covered by a 1 year warranty*



- Configurations:**
- Pool Lab Hybrid 45 (Commander only)
 - Pool Lab Hybrid 90 (Commander + 1 Lieutenant)
 - Pool Lab Hybrid 135 (Commander + 2 Lieutenants)
 - Pool Lab Hybrid 180 (Commander + 3 Lieutenants)
 - Pool Lab Hybrid 225 (Commander + 4 Lieutenants)

Model N°	Description	Chlorine Gas Output (g/hr)	No. of Cells	Liq. Chlorine Dosing	List Price
PLHYBRID45	POOL LAB HYBRID 45g COMMERCIAL CHLORINATOR	45	1	60ml/min	\$6,358.00
PLHYBRID90	POOL LAB HYBRID 90g COMMERCIAL CHLORINATOR	90	2	60ml/min	\$10,244.00
PLHYBRID135	POOL LAB HYBRID 135g COMMERCIAL CHLORINATOR	135	3	60ml/min	\$14,137.00
PLHYBRID180	POOL LAB HYBRID 180g COMMERCIAL CHLORINATOR	180	4	60ml/min	\$18,021.00
PLHYBRID225	POOL LAB HYBRID 225g COMMERCIAL CHLORINATOR	225	5	60ml/min	\$21,911.00
PLLT	POOL LAB LIEUTENANT P/PK INLC. CELL & DATA CABLE	45	1	60ml/min	\$4,278.00

*See Warranty Terms & Conditions

PRICES DO NOT INCLUDE GST

Heat Pump Override + HPO optional extras

How it Works?

If the Pool has not reached the Heat Pump TARGET temperature by the end of the filtration cycle, the system will override the time clock and run the pump until such time as it does.
During this over ride period, the chlorinator output will be zero to prevent over chlorination.



HPOLV

What do I order to ensure my system has the HPO feature?

Order a POOL LAB Chlorinator with a HPO Suffix – Power pack with HPO socket
Order HPOLV interface lead for Heat Pumps with low voltage dry relay contact pump override output,
OR
Order HPO240V interface lead for Heat Pumps with high voltage pump override output.



HPO240V

HPO Leads

ITEM CODE	DESCRIPTION	LIST PRICE
HPO240V	PL CHLORINATOR HEAT PUMP OVERRIDE 5.0m includes TRANSFORMER	\$250.00
HPOLV	PL CHLORINATOR HEAT PUMP OVERRIDE LEAD 5.0M	\$65.00

Optional Extras

Pool Lab Max Upgrade Kit

- Upgrade your Pool Lab Classic or Plus model chlorinator to a MAX model. This factory upgrade will add Wifi communication to the chlorinator enabling it to communicate with the POOL LAB app.
- The POOL LAB app will provide you with the ability to view your pools important data and make adjustments remotely.
- A MAX upgrade will enable an optional EXP module to be added which provides for further control of third-party devices and valves via the POOL LAB app.
- Send the Power pack to Poolpower for a MAX upgrade.
- Freight will be charged on return of the power pack.

Spa Flow Switch

- Connect with any PL/ML Plus and chlorine production will automatically pause when system is switched to spa only mode.
- Connect the ASP with any PL/ML Plus and gain the ability to program the spa volume. When the system is switched to spa only mode, dosing rates are automatically adjusted to the smaller volume of water.



Spa Switch Tapping Saddle

- Available in 40mm & 50mm, for easy retrofit of Spa Flow Switch



Pool Lab Salt Meter

- The PL103 Salt meter is an automatic temperature compensated salt meter with a measurement range of 0-10,000ppm.
- The body is completely sealed with non-replaceable lithium batteries making the unit water proof for the life of the product, while the lithium battery ensures power for years of testing.
- While the PL103 is factory calibrated, if the need arises it can be recalibrated using a salt solution and a few simple button presses.



Item Code	Description	List Price
PL103	POOL LAB SALT METER	\$443.00
PL103-CS	SALT METER CALIBRATION SOLUTION 3000ppm	\$38.00
32533-MP4	SPA FLOW SWITCH & T PIECE (COMPLETE)	\$207.00
TAP50	TAPPING SADDLE 50MM	\$99.00
TAP40	TAPPING SADDLE 40MM	\$99.00
TAPHS	TAPPING SADDLE PIPE HOLE SAW 29MM	\$139.00
MAX-UP-KIT	PL MAX UPGRADE	\$875.00

Replacement Electrodes

Suits Pool Lab Classic, Plus & Mineral Lab

ITEM CODE	DESCRIPTION	LIST PRICE
55541	PL25 REPLACEMENT ELECTRODE	\$865.00
55542	PL35 REPLACEMENT ELECTRODE	\$1,214.00
55543	PL45 REPLACEMENT ELECTRODE	\$1,560.00
55544	PL25 ECO REPLACEMENT ELECTRODE	\$584.00



Suits Puresilk & Hayward HPS

ITEM CODE	DESCRIPTION	LIST PRICE
22541	PS25 REPLACEMENT ELECTRODE	\$865.00
22542	PS35 REPLACEMENT ELECTRODE	\$1,214.00
22543	PS45 REPLACEMENT ELECTRODE	\$1,560.00
22544	PS15LS REPLACEMENT ELECTRODE	\$865.00
22545	PS20LS REPLACEMENT ELECTRODE	\$1,214.00
22546	PS30LS REPLACEMENT ELECTRODE	\$1,560.00
22547	PS40LS REPLACEMENT ELECTRODE	\$1,909.00
22548	PS50LS REPLACEMENT ELECTRODE	\$2,259.00
44566	HPS25B REPLACEMENT ELECTRODE	\$584.00

Replacement Cell Warranty - 12 months + 12 months pro-rata

Warranty is limited to 1 Year if the cell is purchased from a non approved dealer or from online stores.

Examples of non-approved stores: ebay stores, websites where the cell is sold via a shopping cart or where advertised with a price and sold online.

Pool Lab - Control Box Only

ELECTRODE AND CELL HOUSING NOT INCLUDED

ECO:

55589	PL ECO CHLORINATOR CONTROL BOX ONLY	\$1,257.00
-------	-------------------------------------	------------

CLASSIC:

55590	PL25 CHLORINATOR CONTROL BOX ONLY	\$1,257.00
55591	PL35 CHLORINATOR CONTROL BOX ONLY	\$1,333.00
55592	PL45 CHLORINATOR CONTROL BOX ONLY	\$1,333.00
55690	ML25 CHLORINATOR CONTROL BOX ONLY	\$1,257.00
55691	ML35 CHLORINATOR CONTROL BOX ONLY	\$1,333.00
55692	ML45 CHLORINATOR CONTROL BOX ONLY	\$1,333.00

PLUS:

55593	PL25+ CHLORINATOR CONTROL BOX ONLY	\$1,384.00
55594	PL35+ CHLORINATOR CONTROL BOX ONLY	\$1,468.00
55595	PL45+ CHLORINATOR CONTROL BOX ONLY	\$1,468.00
55693	ML25+ CHLORINATOR CONTROL BOX ONLY	\$1,384.00
55694	ML35+ CHLORINATOR CONTROL BOX ONLY	\$1,468.00
55695	ML45+ CHLORINATOR CONTROL BOX ONLY	\$1,468.00

MAX:

55596	PL25MAX CHLORINATOR CONTROL BOX ONLY	\$1,690.00
55597	PL35MAX CHLORINATOR CONTROL BOX ONLY	\$1,752.00
55598	PL45MAX CHLORINATOR CONTROL BOX ONLY	\$1,752.00
55696	ML25MAX CHLORINATOR CONTROL BOX ONLY	\$1,690.00
55697	ML35MAX CHLORINATOR CONTROL BOX ONLY	\$1,752.00
55698	ML45MAX CHLORINATOR CONTROL BOX ONLY	\$1,752.00

HYBRID:

55605	PLCOMM CONTROL BOX ONLY	\$2,453.00
55606	PLLT CONTROL BOX ONLY	\$2,279.00

CLASSIC/HPO:

55590/HPO	PL25/HPO CHLORINATOR CONTROL BOX ONLY	\$1,347.00
55591/HPO	PL35/HPO CHLORINATOR CONTROL BOX ONLY	\$1,423.00
55592/HPO	PL45/HPO CHLORINATOR CONTROL BOX ONLY	\$1,423.00
55690/HPO	ML25/HPO CHLORINATOR CONTROL BOX ONLY	\$1,347.00
55691/HPO	ML35/HPO CHLORINATOR CONTROL BOX ONLY	\$1,423.00
55692/HPO	ML45/HPO CHLORINATOR CONTROL BOX ONLY	\$1,423.00

PLUS/HPO:

55593/HPO	PL25+/HPO CHLORINATOR CONTROL BOX ONLY	\$1,474.00
55594/HPO	PL35+/HPO CHLORINATOR CONTROL BOX ONLY	\$1,557.00
55595/HPO	PL45+/HPO CHLORINATOR CONTROL BOX ONLY	\$1,557.00
55693/HPO	ML25+/HPO CHLORINATOR CONTROL BOX ONLY	\$1,474.00
55694/HPO	ML35+/HPO CHLORINATOR CONTROL BOX ONLY	\$1,557.00
55695/HPO	ML45+/HPO CHLORINATOR CONTROL BOX ONLY	\$1,557.00

MAX/HPO:

55596/HPO	PL25MAX/HPO CHLORINATOR CONTROL BOX ONLY	\$1,720.00
55597/HPO	PL35MAX/HPO CHLORINATOR CONTROL BOX ONLY	\$1,782.00
55598/HPO	PL45MAX/HPO CHLORINATOR CONTROL BOX ONLY	\$1,782.00
55696/HPO	ML25MAX/HPO CHLORINATOR CONTROL BOX ONLY	\$1,720.00
55697/HPO	ML35MAX/HPO CHLORINATOR CONTROL BOX ONLY	\$1,782.00
55698/HPO	ML45MAX/HPO CHLORINATOR CONTROL BOX ONLY	\$1,782.00

Pool Lab - Spares

ITEM CODE	DESCRIPTION	LIST PRICE
22509-B	CELL NUT - BLACK	\$66.00
22511-ML2	ML CELL HOUSING	\$189.00
22511-PL2	PL CELL HOUSING	\$189.00
22529-MSET	SCREWS	\$10.50
55003	WALL BRACKET	\$49.00
55129-B	PANEL COVER	\$35.00
55131-3SET-R2C	REAGENT BARBS	\$18.00
55506-BLACK	INJECTOR CHECK VALVE	\$62.00
55601-KIT	ASP UNION KIT	\$38.00
55615	ACID PERI PUMP	\$225.00
55619	ASP ACID SERVICE KIT	\$129.00
55622	ASP ACCESSORIES KIT	\$103.00
55625	CHLORINE PERI PUMP	\$225.00
55626	ASP CHLORINE ACCESSORIES KIT	\$103.00
55703	ASP REAGENT SET	\$89.90
55599	ASP REPLACEMENT UNIT	\$1,074.00
22520	CELL O-RING	\$18.00



Puresilk & Hayward PS - Spares



ITEM CODE	DESCRIPTION	LIST PRICE
22509	CELL NUT - WHITE	\$66.00
22520	CELL O-RING ID 80MM, OD 88MM, SECTION 4MM	\$18.00
22538	PURESILK FILTER PCB - PS15LS, PS20LS, PS25, PS30LS	\$98.00
22538-1	PURESILK FILTER PCB - TWIN THERMISTORS - PS35, PS40LS, PS45, PS50LS	\$112.00
22539	POWER LEAD C/W PLUG - 240V, 10A	\$42.00
22540	CELL LEAD C/W PLUG - 32V, 20A, 3.5M	\$98.00
22556	PSX REPLACEMENT MAIN CONTROL PCB - PS20LS, PS25, PS30LS, PS35	\$585.00
22557	PSXH REPLACEMENT MAIN CONTROL PCB - PS40LS, PS45, PS50LS	\$585.00
22559	PURESILK CHLORINATOR DATA PCB	\$98.00
22561	T3.15AMP ANTI-SURGE FUSE - PS15LS, PS20LS	\$16.00
22562	T4.0AMP ANTI-SURGE FUSE - PS25, PS30LS, PS35	\$16.00
22563	T6.3AMP ANTI-SURGE FUSE - PS40LS, PS45, PS50LS	\$16.00
44525	PCB - MAIN CONTROL HPS25B	\$585.00
32533-1	50MM x 20MM BSP TEE & PLUG	\$46.00
32611-MP	CHROMATALYZER SAMPLE LINE / FLOW SWITCH ASS'Y	\$202.00
33502-B2	CPS2 ACID ONLY INJECTION PORT HOUSING	\$49.00
33502-B3	CPS3 / COMM1000 ACID & CHL INJECTION PORT HOUSING	\$49.00
33516-D	CPS2 CHEMICAL DELIVERY SERVICE KIT	\$129.00
33517-D	CPS3 / COMM1000 CHEMICAL DELIVERY SERVICE KIT	\$232.00



55622



55619



55626



55506-BLACK



33516-D



33517-D



33502-B2



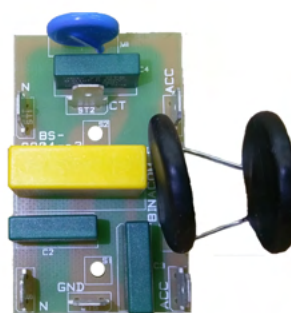
33502-B3



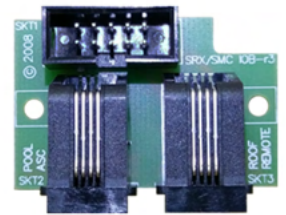
**22556 / 22557 /
44525**



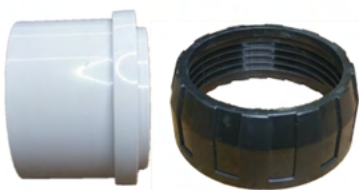
22538



22538-1



22559



55601-KIT



55615



55625



22509-B



22540



32611-MP



55703



55131-3SET-R2C



22511-PL2

Industry Leading Product Warranty

Best in the industry

The Pool Lab NEW for OLD warranty procedure is quick and easy. No more waiting for a specialist trained contractor to conduct the repair. If the item is faulty, a quick and simple NEW for OLD exchange is carried out. Refer to warranty terms and conditions for NEW for OLD replacement.

Simple Procedure

If an issues exists, fill out a warranty claim.
If you have stock to exchange, use that stock and Poolpower will replace it.
If you don't have stock, Poolpower will send the replacement to you.
Poolpower may direct a service agent if available in your area to do this on your behalf.

What happens to warranty item?

The exchanged item must be retained for a period nominated by Poolpower before disposal.
Poolpower may request to have it sent to Melbourne for inspection.
Poolpower may request a service agent to pick up for inspection.

Customer Satisfaction

Confidence in the reliability of Pool Lab products and a desire to minimise downtime and maximise customer satisfaction has provided for this NEW for OLD program.

Efficient, Quick and Easy

No extra technical knowledge, training or time consuming repairs.

Online Product Registration

Register the installation of a Pool Lab product through our website, upload the proof of purchase and then never worry about warranty again. All you need is the product serial number to lodge a claim.

Comprehensive Trouble Shooting Guides

The Poolpower website has simple trouble shooting guides and videos for the homeowner, builder or service technician to refer to. All you need is a phone or computer.

	PL ECO	PL SLATE	PL FLOUT	PL MAX	Mineral Lab	PL ASP	PL EXP	PL HYDRO	PERISTALTIC PUMPS (Acid/Chlorine)
DOMESTIC APPLICATIONS									
Product Warranty Control Box & Cell	2 Year NEW for OLD	5 Year NEW for OLD	5 Year NEW for OLD	5 Year NEW for OLD	5 Year NEW for OLD	5 Year NEW for OLD	5 Year NEW for OLD	N/A	2 Year NEW for OLD
Warranty Terms	1 Year Full + 1 Year Prorata	3 Year Full + 2 Year Prorata	3 Year Full + 2 Year Prorata	3 Year Full + 2 Year Prorata	3 Year Full + 2 Year Prorata	3 Year Full + 2 Year Prorata	3 Year Full + 2 Year Prorata	N/A	Exclusions: Squeeze Tube, Rollers, Drum Cap, Check valve, Tubing
Infield Labour Within 30km of Service Agent	N/A	1 Year	1 Year	1 Year	1 Year	1 Year	1 Year	N/A	1 Year
COMMERCIAL APPLICATIONS									
Product Warranty Control Box & Cell	N/A	1 Year NEW for OLD	1 Year NEW for OLD	1 Year NEW for OLD	1 Year NEW for OLD	1 Year NEW for OLD	1 Year NEW for OLD	1 Year NEW for OLD	1 Year NEW for OLD (Exclusions as per above)
Infield Labour Within 30km of Service Agent	N/A	1 Year	1 Year	1 Year	1 Year	1 Year	1 Year	1 Year	1 Year (Exclusions as per above including labour)

PLEASE NOTE:

- Warranty excludes consumables (reagents) and all liquid acid/chlorine delivery maintenance items.
- Warranty does not restart with an exchange, the warranty is fixed to the original installation date.
- You may be charged to clean a cell and validate the cell condition.
- You may be charged to evaluate a power supply or ASP unit to validate its condition.

TERMS OF TRADE

TERMS AND CONDITIONS OF SALE By Poolpower Australia Pty Ltd (ABN 57 089 882 520) "the Company"

CREDIT ACCOUNTS

1. The first order for new credit accounts will be required upfront. All subsequent orders will be supplied under credit terms.
2. Payment in full is required by the 30th of the month following the issue date of invoice.
3. A credit limit will be applied to all accounts unless otherwise specified and agreed upon by both the Customer and the Company.
4. Accounts with outstanding invoices between 1 and 30 days overdue will be put on 'stop credit' until outstanding monies are received.
5. Accounts with outstanding invoices between 31 and 60 days overdue will incur a 1.5% penalty of the total amount due, and be given 14 days to pay.
6. Accounts more than 75 days overdue will be referred to a debt collection agency.
7. In the event of the Customer being in default of his obligation to pay and the overdue account is then referred to a debt collection agency, the Customer shall be liable for all fees, charges and/or commissions charged by the debt collection agency in pursuit of recovery of the debt.
8. In the event where the Company or the Company's agency refers the overdue account to a lawyer the Customer shall also pay as a liquidated debt the charges reasonably made or claimed by the lawyer on the indemnity basis.
9. Where more than one party is liable for payment of this account, they will be liable jointly and severally.
10. The Customer covenants that the information provided in this Application is true and correct.
11. Orders are subject to the terms and conditions notified to the Customer from time to time.
12. Property in any goods sold will not pass until payment for those goods is made in full. The Customer shall keep such goods separate and shall allow access to the Company to repossess such goods where this account is more than 30 days overdue or where the Customer goes into receivership, liquidation or administration.
13. Reference to an individual includes reference to his heirs and executors and reference to a company shall include its Receivers, Administrator and Liquidator.

FREIGHT

1. All orders into store to metropolitan Melbourne, Sydney, Brisbane, Gold Coast, Adelaide and Perth will be subject to a freight and handling charge of \$30.00 ex GST.
2. For deliveries outside of metropolitan Melbourne, Sydney, Brisbane, Gold Coast, Adelaide and Perth will be subject to a freight and handling charge of \$40.00 ex GST except if the area is deemed to be remote. For remote areas, freight and handling charges will be applied at the discretion of the Company, and will be assessed on a per order basis.
3. For orders not delivered to a business address, delivery will automatically be marked with an 'Authority to Leave' by the delivery company in the event there is no person present to receive it. The Company shall bear no responsibility for goods left under these conditions.

RETURNS

Where goods are returned to us, credit will only be issued under the following conditions:

1. A return credit ("credit") authority number must be obtained from the supply point prior to the return of any goods. We may refuse to give a credit or accept the return of any goods;
2. You must provide the invoice number and date of purchase before a credit will be issued;
3. The credit authority number must be clearly marked on the packaging of goods returned to us. Failure to comply with this requirement could result in our refusing to accept delivery of the returned goods.

All claims for credit must be supported by:

4. Carriers consignment note or similar receipt of delivery;
5. Our relevant invoice number; and
6. The credit number issued by Poolpower.

Without in any way limiting our discretion to refuse to accept the return of any goods, the following goods will not be returnable:

7. Any goods which are not in original condition including packaging;
8. Any goods that are manufactured as made to order unless faulty – any manufacturing surcharge is non-refundable

Poolpower will impose a restocking fee for goods returned where no fault is found according to the following schedule:

0 to 30 days: 20% of invoice value + freight costs + carton costs

Over 30 days: 50% of invoice value + freight costs + carton costs

INTELLECTUAL PROPERTY USE AND INTERNET TRADING

It is for the protection of the consumer and our brand that we implement IP and internet trading conditions.

We aim to provide IP use authority to pool industry professionals that have experience and detailed knowledge of our products to best advise the consumer and best represent our brands.

Approval to use images, trademarks, or any IP owned by POOLPOWER AUSTRALIA PTY LTD must be applied for prior to use.

Application for use is not approval to use. You must receive written confirmation from POOLPOWER AUSTRALIA PTY LTD that approval has been granted.

The sale of Poolpower products through third parties online, or on online platforms such as ebay is not permitted.

Conditions of use (where approval has been granted by POOLPOWER AUSTRALIA PTY LTD)

- POOL LAB or MINERAL LAB whole products may be advertised and promoted on the internet WITHOUT reference to price. DO NOT PUBLISH PRICE.
 - CELLS or ELECTRODES made by Poolpower may be advertised and promoted on the internet WITHOUT reference to price. DO NOT PUBLISH PRICE.
- POOL LAB or MINERAL LAB maintenance items and spare parts may only be advertised and promoted on the internet if you are an Authorised Platinum Dealer. Authorised Platinum Dealers must demonstrate a sales history of whole products as defined by POOLPOWER AUSTRALIA PTY LTD.

Terms and conditions of IP use

Use of IP owned by POOLPOWER AUSTRALIA PTY LTD may be withdrawn at any time. A request for the IP to be removed or altered from digital media, online or from publications, may be made at any time.