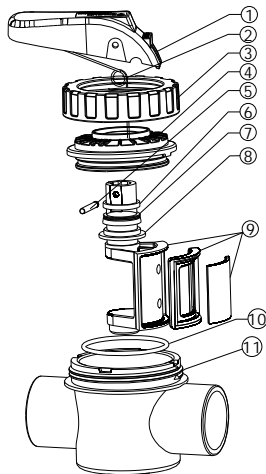


REPLACEMENT PARTS OF VALVE

Model: V40-2(E) V40-2(A)

Key No.	Part No.	Description	Qty
1	01010005	Valve Handle	1
1	01010028	Valve Handle (Blank)	1
2	03014015	Spring	1
3	01021123	Nut	1
4	01010001	Cover for Valve	1
5	03018148	Shaft	1
6	01181056	Anchor ring	1
7	02010048	O-Ring for valve Rotor	2
8	01181057	Anchor plate	1
9	89460305	Diverter assembly	1
10	02011204	O-ring	1
11	01173009	1.5" port valve housing (Metric)	1
11	01170052	1.5" port valve housing (Imperial)	1

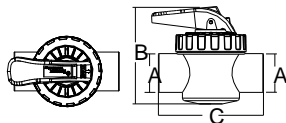


Model: V50-2(E) V50-2(A)

Key No.	Part No.	Description	Qty
1	01010005	Valve Handle	1
1	01010028	Valve Handle (Blank)	1
2	03014015	Spring	1
3	01021124	Nut	1
4	01010002	Cover for Valve	1
5	03018148	Shaft	1
6	01181056	Anchor ring	1
7	02010048	O-Ring for valve Rotor	2
8	01181057	Anchor plate	1
9	89460303	Diverter assembly	1
10	02011202	O-ring	1
11	01173011	2" port valve housing (Metric)	1
11	01170050	2" port valve housing (Imperial)	1



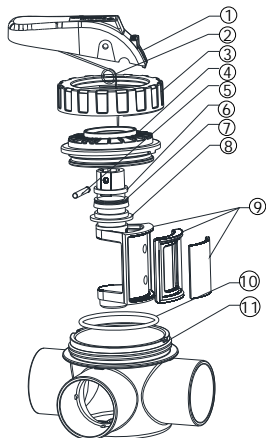
	A	B	C
1.5" Metric	Ø50	149	164
2" Metric	Ø63	161	190
1.5" Imperial	Ø48	149	164
2" Imperial	Ø60	161	190



REPLACEMENT PARTS OF VALVE

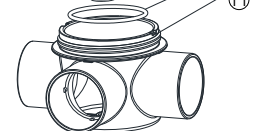
Model: V40-3(E) V40-3(A)

Key No.	Part No.	Description	Qty
1	01010005	Valve Handle	1
1	01010028	Valve Handle (Blank)	1
2	03014015	Spring	1
3	01021123	Nut	1
4	01010001	Cover for Valve	1
5	03018148	Shaft	1
6	01181056	Anchor ring	1
7	02010048	O-Ring for valve Rotor	2
8	01181057	Anchor plate	1
9	89460305	Diverter assembly	1
10	02011204	O-ring	1
11	01173010	1.5" port valve housing (Metric)	1
11	01170054	1.5" port valve housing (Imperial)	1

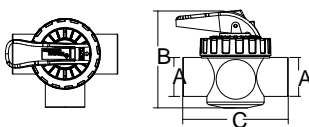


Model: V50-3(E) V50-3(A)

Key No.	Part No.	Description	Qty
1	01010005	Valve Handle	1
1	01010028	Valve Handle (Blank)	1
2	03014015	Spring	1
3	01021124	Nut	1
4	01010002	Cover for Valve	1
5	03018148	Shaft	1
6	01181056	Anchor ring	1
7	02010048	O-Ring for valve Rotor	2
8	01181057	Anchor plate	1
9	89460303	Diverter assembly	1
10	02011202	O-ring	1
11	01173012	2" port valve housing (Metric)	1
11	01170051	2" port valve housing (Imperial)	1



	A	B	C
1.5" Metric	Ø50	149	164
2" Metric	Ø63	161	190
1.5" Imperial	Ø48	149	164
2" Imperial	Ø60	161	190



CHECK VALVE

TWO WAY VALVE

THREE WAY VALVE

Model: V40-1(E) / V40-1(A)

V50-1(E) / V50-1(A)

V40-2(E) / V40-2(A)

V50-2(E) / V50-2(A)

V40-3(E) / V40-3(A)

V50-3(E) / V50-3(A)

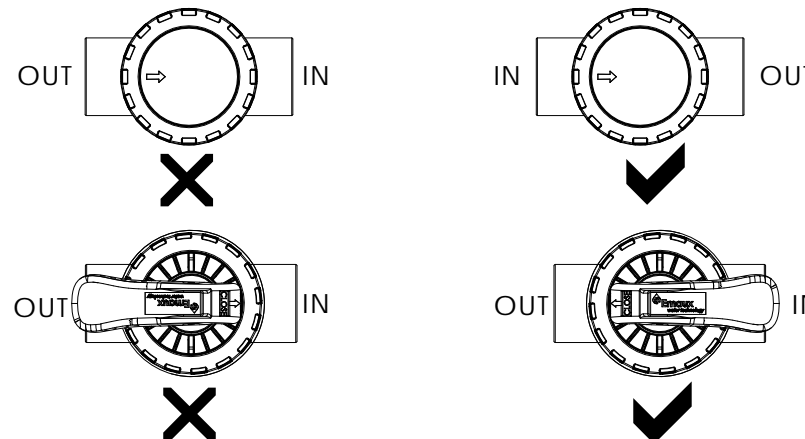


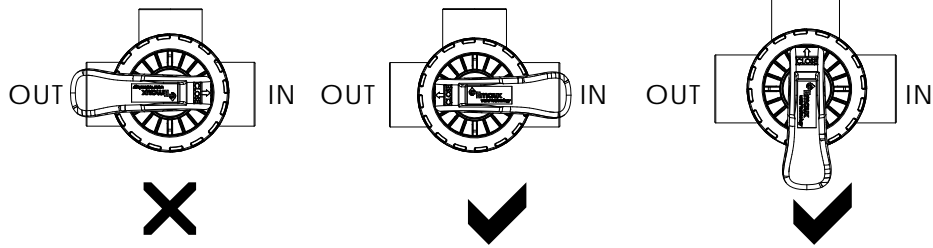
FEATURES

- Made from durable ABS and PVC
- Large handle for easy adjustment
- Extremely reliable and low maintenance
- Able to withstand extreme chemical corrosion and temperature fluctuations
- Suitable for 1.5" or 2" PVC pipe

INSTALLATION

With the use of the best imported materials available and rigorous quality control standard, EMAUX valve are made for easy and trouble-free installations. Superior quality and plumbing versatility make EMAUX valve the #1 choice of pool and spa professionals.





The valve is designed to close outlet port(s) only and may leak when blocking inlet port.

WARNING

When dismantling check valve for service please ensure

- 1) Pump is switched off
- 2) Suction and discharge isolating valves are in a closed position to prevent water draining back from the swimming pool.
- 3) Arrow must point to flow direction.

Check Valve Assembly Diagram



- 1) Please release the internal pressure before unscrewing the nut;



- 2) Unlock the cover with a flat head screw driver;



- 3) Check and clean the inside of the valve then spread Silicon based lubricant on the O ring ;



- 4) Push the cover back in position, make sure the direction sign conform to the actual flow direction;



- 5) Screw the nut back on .

Two/Three Way Valve Assembly Diagram



- 1) Please release the internal pressure before unscrewing the nut;



- 2) Lift the key assembly out;



- 3) Spread Silicon based lubricant on key assembly as shown;



- 4) Apply Silicon based lubricant on O-ring as shown;



- 5) Match the lug on the cover to the hollow on the housing;



- 6) Push the key assembly back in position;



- 7) Tighten the screw;

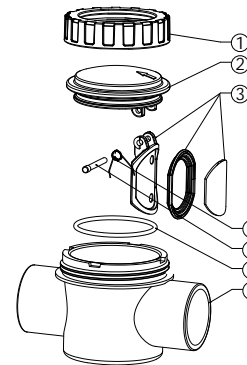


- 8) Switch the handle to desired position.

REPLACEMENT PARTS OF VALVE

Model: V40-1(E) V40-1(A)

Key No.	Part No.	Description	Qty
1	01021123	Nut	1
2	01040002	Cover	1
3	89460302	Flapper assembly	1
4	03014021	Spring	1
5	01021119	Shaft	1
6	02011204	O-Ring	1
7	01173009	1.5" port valve housing (Metric)	1
7	01170052	1.5" port valve housing (Imperial)	1



Model: V50-1(E) V50-1(A)

Key No.	Part No.	Description	Qty
1	01021124	Nut	1
2	01040001	Cover for Valve	1
3	89460301	Flapper assembly	1
4	03014021	Spring	1
5	01021119	Shaft	1
6	02011202	O-Ring	1
7	01173011	2" port valve housing (Metric)	1
7	01170050	2" port valve housing (Imperial)	1

	A	B	C
1.5" Metric	Ø50	115	164
2" Metric	Ø63	129	190
1.5" Imperial	Ø48	115	164
2" Imperial	Ø60	129	190

